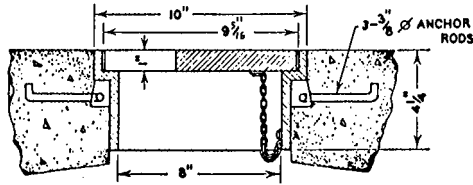


R-7514

Valve Handhole Frame and Lid



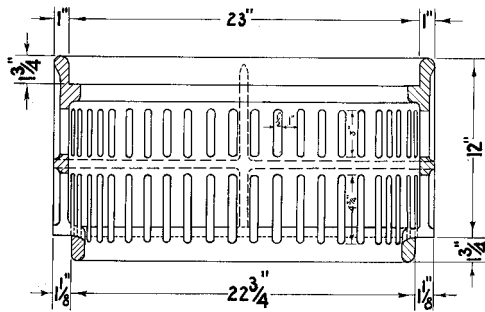
Anchor rods not furnished



Used as access covers to valves for steam-, air- or waterlines in railway terminals, subway or industrial installations. Lids furnished standard without lettering. Also available are lids marked "S", "A", "E" or "W". Standard units have lid chained to frame to prevent loss. Note large slot in cover to aid in easy removal.

R-7516

Round Ballast Screen



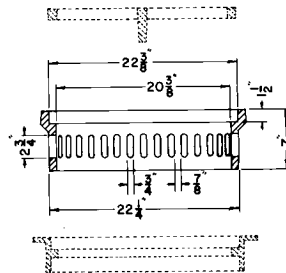
Used where positive drainage must be assured



Designed to fit R-2504 standard catch basin frame with grate fitting top recess of ballast screen. Also compatible with R-1713 frames and lids. Can be double or triple stacked as needed.

R-7516-C

Round Ballast Screen



Designed to fit in lid opening of R-5901-E slab type frame. Frame is designed to fit 24" corrugated metal pipe. When specified, top cover grate and frame can also be furnished.

Can be double or triple stacked as needed.